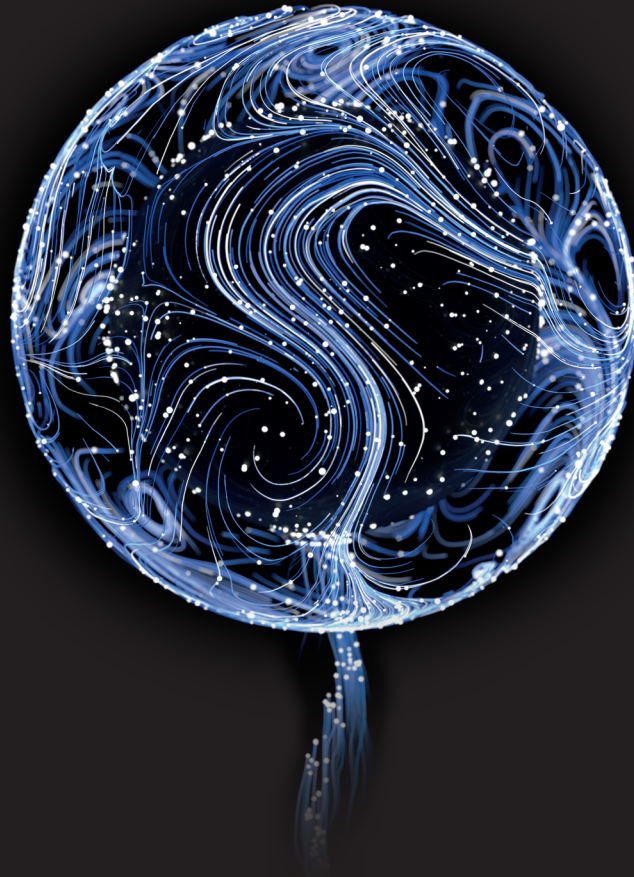


Wicotrace 360°



swiss made
software



More than just a data management system

With Wicotrace 360°, the platform solution connects the entire Witschi ecosystem. Managing your measurement results and organising measurement parameters has never been easier. Via intelligent interfaces, you can quickly and easily connect Wicotrace 360° to your Big Data solution and BI tools in order to analyse all your data centrally worldwide and in real time.

Thanks to the generic platform solution, in addition to data management, completely new possibilities are offered, which significantly simplify processes between T0 and customer service and make them more efficient. Wicotrace 360° allows you to track the entire product lifecycle of each of your watches.

Focus on data security

The platform was developed and tested according to with the latest cyber security guidelines. Thanks to the continuous development and updating of the components, your valuable data is protected against misuse.

Efficient collaboration

User groups and permissions allow, access to data by department and user. This makes collaboration within departments and with external stakeholders secure and efficient. You can also share results directly with your team and customers, even if they do not have an account.



LEADING SWISS PRODUCTS

Wicotrace 360°

- Centralised, worldwide parameter and result management for all Witschi service devices
- Available as a SaaS solution including hosting in Switzerland
- Powerful data management with encrypted communication
- Smart parameterisation and analysis of measurements in the browser, independent of platform and device
- User management with customisable roles and groups for security and efficiency when handling data
- Direct interfaces to your BI tools / Big Data solutions
- Share results with people without an account
- Connection of Witschi Terminal, ProofMaster (CP) and WAIO directly via Ethernet or wireless connection
- Global device service for easy connection of devices and simplified login with PIN
- PC software Witschi Apps for connecting the devices via a PC
- Continuous expansion of services and new functionalities according to the feature list
- Modular offers for every need



General

Languages	German, French, English
Compatible devices	ChronoMaster (PRO) ChronoMaster Air ChronoMaster Auto (PRO) Micromat C ProofMaster (PRO) ProofMaster CP (PRO) Proofmaster M/S QuartzMaster (PRO) QuartzSensor (PRO) Terminal WAIO Chronoscope M10 (only possible via USB interface) Chronoscope M20
Database	Hosting by Witschi (SaaS on Microsoft Azure)
Printout	Browser-dependent
Export	Excel, sharable link

Display devices

Operating system	Windows PC, Mac or mobile devices
Browser	Preferably Microsoft Edge or Google Chrome
Devices	PC and laptop. Limited functionality on tablets and smartphones

Witschi Electronic AG

Bahnhofstrasse 26 | 3294 Büren an der Aare | Switzerland
Tel. +41 (0)32 352 05 00 | welcome@witschi.com | witschi.com

Technical specifications subject to
change without notice.

64.63D41e | 18.08.2025