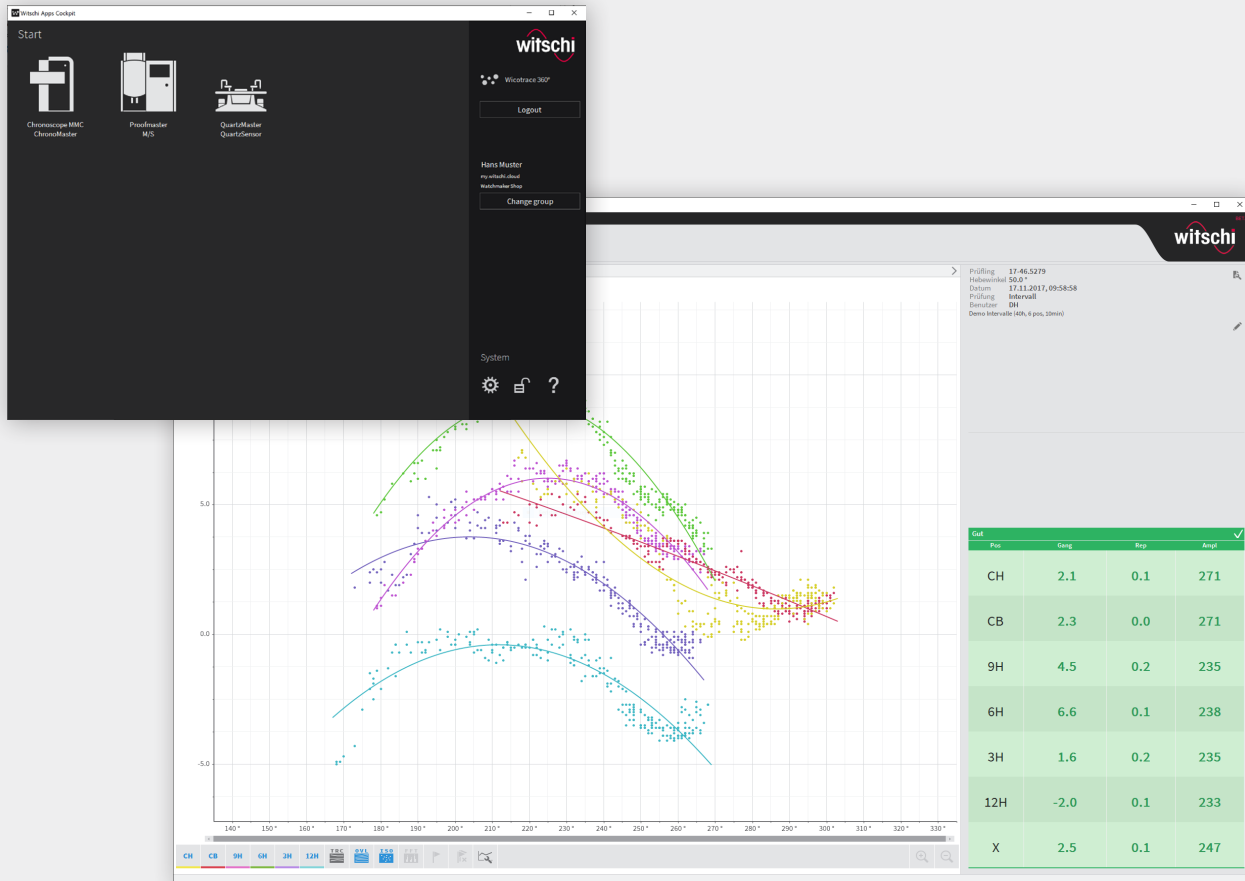


Witschi Apps



swiss made
software



Witschi Apps, the powerful software package for your Witschi devices

With the various PC applications, you can control the Witschi measuring devices and connect all devices to a common ecosystem. Witschi Apps works in conjunction with the Wicotrace 360° database solution, which stores all data securely and reliably. This gives you convenient access to parameter and result management.

Versatile measurement and analysis functions

All parameters are loaded from the central database so that the user can take care of the measurement. Numerous calculation variables and display forms, such as unbalance, Fourier analysis or isochronism, can be derived from the measurement data. In addition, measurements can be compared with each other at different times or with different complications.

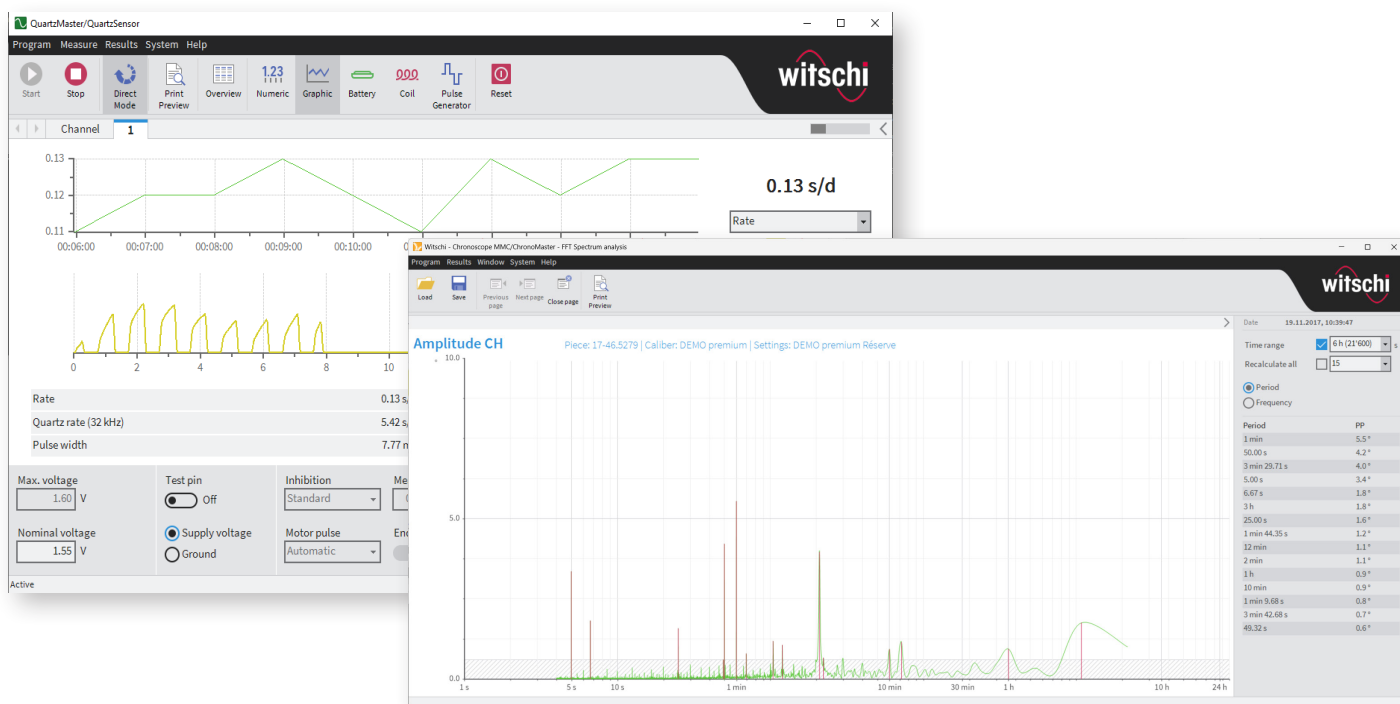
From watchmakers for watchmakers

The software is tailored to the needs of the watch industry and is based on the familiar user interface. New functions are regularly added with regular updates, which continuously improve the performance of the Witschi measuring devices.

Witschi Apps

Witschi Apps

- PC applications for controlling the Witschi measuring devices and displaying the measurement results
- Connection to the Wicotrace 360° parameter and measurement results management system
- Connection to the user and group administration of Wicotrace 360°
- 0h/24h measurements with automatic evaluation
- Calculation of mathematical characteristics (mean values and differences of the test positions)
- Calculation of the unbalance data (Dvm and phi)
- Isochronism (calculations and graph)
- FFT analysis (Fast Fourier Transformation)
- Asynchronous measurement with up to 10 devices
- Measuring tourbillon watches with ChronoMaster Auto PRO



General

Languages	German, French, English, Spanish, Italian, Chinese (main applications only)
Compatible devices	ChronoMaster (PRO) ChronoMaster Air ChronoMaster Auto (PRO) Micromat C QuartzMaster (PRO) QuartzSensor (PRO) Proofmaster M and S Chronoscope M10 (only possible via USB interface) Chronoscope M20
Interfaces	USB, Ethernet

Results management

Printout	PC printer A4 (optional) Label printer (optional)
Export	PDF

Minimum requirements

Operating system	Windows 10, Windows 11 (64-bit)
Processors	Intel and AMD, not compatible with ARM processors (e.g. Microsoft Surface X)
Screen resolution	min. 1366 x 768 px

Witschi Electronic AG

Bahnhofstrasse 26 | 3294 Büren an der Aare | Switzerland
Tel. +41 (0)32 352 05 00 | welcome@witschi.com | witschi.com

Technical specifications subject to
change without notice.

64.63D41e | 18.08.2025