

# ALC II

## Measuring Instruments for Seal Integrity and Leak Test

*More Powerful and Friendlier with PC Measurement Technique*



### **The ALC II instrument family reaches new standards in performances and user-friendliness.**

A novel concept allows the user to solve all sorts of test problems quickly, thoroughly and easily with a single system. A wide selection of intelligent industry modules and desktop units is available for setting up a new test environment. They can be connected with a USB bus to any PC and operated with the powerful and user-friendly PC software.

- An instrument family for all kinds of air-based seal integrity and leak tests.
- Various versions of industry modules and desktop units for solving all possible kinds of test problems.
- Single or combined measurement and evaluation of flow, leak rate, volume, relative and differential pressure.
- Suitable for manual, partially and fully automated test control unit in all fields.
- Best measurement accuracy (a resolution of 1  $\mu\text{l}/\text{min}$  can be reached under appropriate conditions) with optimised mechanical and electronic design complemented by innovative software.
- Up to four sensor/pneumatic units, each one with up to four measuring channels, connected by USB 2.0 to any type of PC.

- Vacuum and/or pressure test. Various instrument executions available in the -0.8 to 10 bar pressure range (up to 30 bar as an option). Automatic control of the test pressure.
- Any number of test cycles with automatic pass/fail evaluation.
- Easier data entry with test parameter masks.
- Easy interpretation of numerically and graphically displayed measurements and results.
- Automatic determination of the best stabilisation and measurement time based on pressure curve analysis. This ensures that both thermal and plastic measurement factors related to the sample are correctly taken into account.
- Automatic determination of the suitable measurement time according to the specified accuracy.
- Flexible acquisition, evaluation and storage of measurements and results. A gapless traceability of measurement results can be carried out.
- The storage capabilities for programs, parameters, measured values and results are only limited by the PC resources.
- Simple functions for checking and calibrating the test system.
- Statistical monitoring methods for a more reliable operation.
- The PC software for ALC II runs under MS Windows XP®. This provides simpler operation and countless data processing capabilities.
- Operation by control panel, PC keyboard, mouse, touch screen or external.
- Online display of the different pressure curves.
- Communication with external controllers through RS interface or digital I/O.
- Any number of freely parameterised measurement programs can be stored and managed.
- ... and of course a vast potential for solving specific test problems remains available

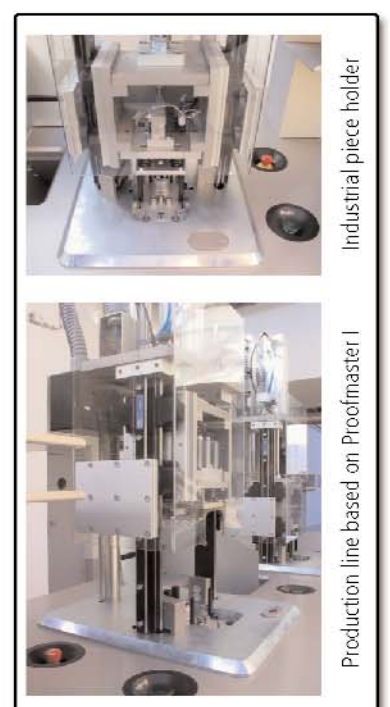
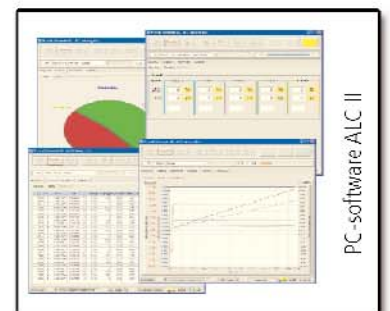
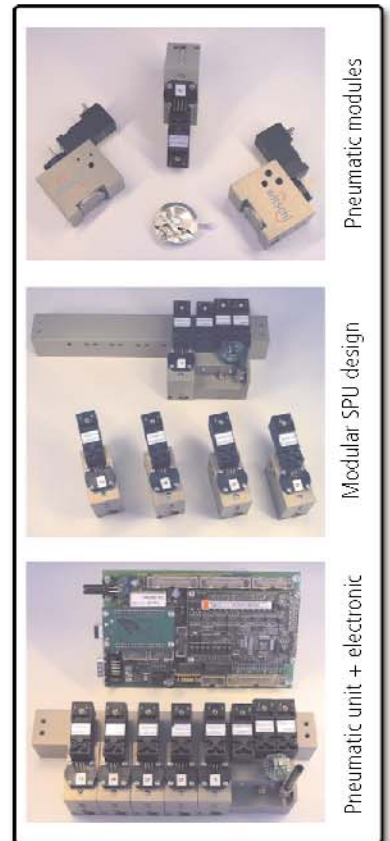
### ALC II – an industrial test instrument as friendly as an office PC

The PC software runs under MS Windows XP®. Numerous possibilities are available at the operating level, in the acquisition and evaluation of measurements and results and for data display and management.

The computing power available for the measurement analysis and for complex calculations is quite high. It provides better measurement dependability and a highly reliable pass/fail evaluation, as well as a shorter measurement time

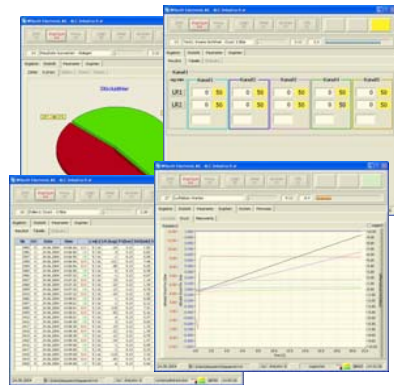
ALC II offers the most up-to-date technology. Novel, efficient methods carry out operation tests based on individual seal integrity and flow measurements.

Witschi delivers turnkey systems or a wide selection of component versions for automatic equipment.



# Overview ALC II Instrument Family

... more powerful and friendlier with PC measurement technique



PC-Software ALC II, user-friendliness and powerful

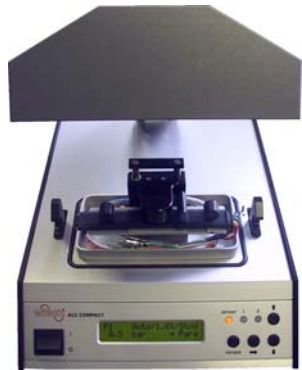
1 channel industry module

- Desktop-, Industry-, Laptop-, Panel- or Tablet-PC with USB 2.0 bus
- Up to 10 measuring channels can be connected



1 channel desktop unit without locking system

Instruments, Industry- and Basic Modules are connected by USB 2.0 bus to any type of PC



1 channel desktop unit with test chamber



4 channel desktop unit with test chamber



1 channel industry module



5 channel industry module



5 channel basic module + electronic

Desktop units in various variants, with or without locking system, for laboratories, quality control or for manual productions

Industry-modules for easy integration in automatic production lines

Basic modules for easy integration in customer specific control systems